

SUSTAINABILITY 2024 **REPORT**

靜宜大學永續報告書





FOREWORD



"Before education, we first love our children." This is the founding philosophy of Providence University and a deeply held belief in the hearts of every member of the Providence community. True education transcends the mere acquisition of textbook knowledge. We believe that the core of education lies in caring for and understanding the uniqueness of each student, providing them with a nurturing and compassionate learning environment. In such an environment, students not only acquire knowledge but also learn how to become responsible and compassionate individuals.

At Providence, we emphasize holistic education, which includes the development of psychological, emotional, and social skills, allowing students to unlock their fullest potential and guiding them toward a brighter and more sustainable future.

Providence University does not solely focus on imparting academic knowledge; we also prioritize the cultivation of professional skills and personal career development. We collaborate with various industries to provide students with internship and employment opportunities, ensuring a smooth and natural transition from university to the workplace.

Through hands-on, participatory learning, we aim to nurture graduates who are not only competitive but also creative and adaptable in the face of future change. With comprehensive career planning and mentorship programs, we support students in exploring their potential and achieving their professional dreams.

As an educational institution committed to social responsibility, we actively engage in social innovation and the cultivation of social enterprises, promoting social justice and economic inclusivity. We are dedicated to integrating Sustainable Development Goals (SDGs) into our curriculum and campus operations. This commitment is reflected not only in our teaching content but also in our daily administrative and operational decisions. From the use of green energy and waste management to supporting a green environment and promoting practical applications, every action we take is a testament to our commitment to a sustainable future.

Professor Lin, Shih-Ling
President

May You be Praised !

Preserve and cherish our shared environment





End poverty in all its forms everywhere

Student Support

"Providence University provides comprehensive and reassuring financial assistance measures to support economically disadvantaged students, allowing them to focus on their studies. These measures include the Flying Eagle Educational Counseling Mechanism, tuition waivers, and reductions, scholarships for disadvantaged students, living assistance grants, emergency relief funds, off-campus rent subsidies, on-campus accommodation discounts, grants for low-income students, emergency relief funds from the Ministry of Education, various scholarships and financial aid both on and off campus, and priority job opportunities on campus for economically disadvantaged students. These initiatives aim to alleviate their financial burden and provide necessary living support. In 2024, nearly 111 million NTD in financial assistance was provided to economically and culturally disadvantaged students, benefiting 7,594 students."

Social care

Indigenous people :

Conducted visits to indigenous communities, educational seminars, skill workshops, and community care activities, totaling 21 sessions, with 505 participants.

Community :

A total of 13 outreach and care service events were held at locations including the Sha-Lu Children's Welfare Center, Sanmin Social Housing in Wuqi District, Taichung Autism Education Association, National Museum of Natural Science, Shoe Industry Museum, Longgang Community Center, Taiwan Glove Museum, Xihu Sugar Factory, Hao-Chi Elderly Long-Term Care Center, and De-Lu Home. The service efforts were jointly organized by the Tzu-You Club and Chong-Ching Club, involving 175 volunteer participations and 179 participants from the partner institutions..

Providence University “Flying Eagle Little Red Riding Hood” Project

Economically disadvantaged women internationally often face a shortage of sanitary pads during menstruation, increasing their risk of urogenital infections. Some women are even forced to drop out of school or engage in coerced sexual activity, indirectly heightening the risk of HIV infection. Providence University organized the “Hand in Hand, Love Together” initiative to instill the value of “helping others benefits oneself” in students. Participants personally made 360 eco-friendly cloth sanitary pads and 152 small cloth towels, which were then distributed to economically disadvantaged women and elderly care institutions in Kenya, Orchid Island, Cambodia, and the Philippines.



Together for Change: “Zhai-Yi Qi” Project

Cambodia faces poverty, limited educational resources, and public health challenges. Many children grow up in resource-scarce environments, lacking access to quality education and proper hygiene. To address these issues, Providence University students formed a service-learning team to support the children at Chagao Orphanage through diverse educational and health-promotion activities. They assisted with major cleaning and wall painting to improve living conditions, taught proper tooth-brushing habits to raise oral health awareness, and integrated lessons in Chinese, English, and Khmer, including vocabulary, numbers, and songs. Artistic activities such as paper-cutting and painting were used to stimulate creativity, helping children regain confidence and joy in learning. In the villages of Chagao Province, the team participated in a poverty alleviation program by Crown Technology, assisting in transporting and distributing essential supplies to ensure they reached families in need. At the Mother Teresa Convent in Phnom Penh (Hope House), students provided volunteer haircuts and helped clean the facility, improving the quality of life for residents who have long faced hardship and creating a cleaner, safer living environment.





End hunger, achieve food security and improved nutrition and promote sustainable agriculture

Campus food Hygiene and safety

Providence University upholds the highest standards of food hygiene and safety to protect the health and well-being of all students, faculty, and staff. All campus dining operations comply with the Good Hygiene Practice (GHP) standards set by the Ministry of Health and Welfare, ensuring that every stage—from food sourcing to preparation—is carefully monitored and controlled.

In accordance with Article 9 of the Regulations on Hygiene Management for School Cafeterias and Faculty-Student Consumer Cooperatives, all food suppliers serving the university are required to register daily meal information on the Campus Food Ingredient Registration Platform. Each day, dining facilities and individual vendors are supervised to ensure that menus, seasonings, and ingredient details are accurately recorded in the Ministry of Education's system. The University's Food Service Center assists in monitoring and verifying the completeness and accuracy of all registration data on the platform

Campus food waste

Providence University is committed to building a green and sustainable campus where food waste is no longer treated as garbage but as a valuable resource for local co-prosperity. In collaboration with local farms, we transform campus food waste into natural feed to cultivate healthy, drug-free local ingredients.

Community Garden

Since 2017, Providence University has collaborated with the Caonan Community with the goal of revitalizing the community and enhancing residents' well-being. The vegetables planted by the adopters of the Wuqi Main Drainage Canal were integrated with nutritional assessment, allowing the elderly population to maintain a balanced diet and improve their health.





Ensure healthy lives and promote well-being for all at all ages

Employee Health Promotion

Providence University prioritizes the physical and mental well-being of its faculty and staff. Each year, it partners with medical institutions to provide regular health check-ups on campus, achieving a participation rate of over 95%. Additionally, the university offers a variety of health awareness and promotion activities, such as exercise guidance classes, hiking events in the nearby mountains, campus walking programs, health consultations, traditional Chinese medicine wellness sessions, vision care, healthy eating initiatives, and risk health education, among others.

Community Health Activity

2024 Taichung Lunar New Year Cup National Soccer Invitational

To promote children's health through physical activity, Providence University has partnered with the Taichung City Sports Bureau and the Taichung Coastal Football Association to co-host the 2024 Taichung Lunar New Year Cup National Soccer Invitational for the third consecutive year. The tournament was held at Providence University, Xitun Soccer Field, and Chaoma Soccer Field. It attracted 75 teams and over 1,000 young soccer players from across Taiwan, all showing great enthusiasm and energy. The event highlighted Taichung's strong grassroots football development achievements.





2024 Papola Cultural International Football Festival

Providence University collaborated with Yuncheng International Co., Ltd. and the Taichung Coastal Football Association to organize the 2024 Papola Cultural International Football Festival, inviting schoolchildren from Taiwan, Thailand, Indonesia, Malaysia, and Vietnam. Through friendly competition and cultural exchange, the event built international friendships among children and promoted grassroots participation in soccer. It helped boost the soccer movement in Taiwan, advance fundamental education, and strengthen players' and coaches' skills and knowledge, laying a solid foundation for future development.

2024 Kia Kid' s Cup Family Soccer Carnival

In partnership with Kia Taiwan (Sime Darby Kia) and Create Motors Co., Ltd., Providence University hosted the 2024 Kia Kid' s Cup, which has become a meaningful and educational football event in Shalu District, Taichung. 29 teams from counties and cities across Taiwan participated. The event aimed to foster exchanges among youth players and hoped to nurture future soccer talents who can shine on the international stage—enhancing public interest and national engagement in the sport.

2024 FUN Energy Sports Camp

Providence University hosted five sessions of youth sports camps targeting elementary school students. The camps offered 12 sports:



basketball, badminton, table tennis, pickleball, soccer, skateboarding, rock climbing, spinning, handball, dance fitness, field hockey, and tee-ball. The diverse programs encouraged children to explore, try new experiences, and unlock their potential through fun, varied physical activities.

Providence Morning Swim Club

Since 1989, Providence University has supported the formation of the Providence Morning Swim Club to serve residents in nearby communities. For 36 years, the university has upheld a spirit of shared prosperity with the community by opening campus facilities for public use. These facilities provide local residents with opportunities for healthy recreation, parent-child activities, and a premier space for both aquatic and land-based exercise.

Level C Fitness Instructor Certification Workshop

In partnership with the Chinese Taipei Fitness Association, Providence University held a Level C Fitness Instructor Certification Workshop. The workshop aimed to promote safe and effective fitness practices that enhance physical function, boost metabolism, and slow aging and osteoporosis. By offering professionally guided courses, assessments, and certifications, the program enabled participants to improve their fitness instruction skills and raised public awareness of the importance of professional, science-based exercise education.





Ensure inclusive and equitable quality education and promote lifelong learning opportunities for all

Public resources

Library

Luking Library in Providence University offers free public access to valuable resources, including library spaces, reading facilities, books, publications, and more. Public members, Alumni, and Retired faculty and staff can access and borrow these resources by applying library cards. Additionally, several art exhibitions are introduced and displayed in the first-floor lobby of Luking Library, adding to the richness of our resources.

Facilities

Wi-Fi: Free Wi-Fi is available to all campus members with a valid account. Visitors can request temporary accounts at the front desk of the library.

PC room: Computer rooms are free to use for visitors.

Art center: Providence University's versatile space fosters new connections between creators, artworks, and the public in this serene setting. During regular exhibitions, it provides diverse artistic performances for students and the general public.

Free Course

The Providence University Exploring Taichung School program offers hands-on courses that engage students from elementary through high school. These courses focus on experiential learning, encouraging active student participation and collaboration. We empower students to expand their educational horizons by promoting resource sharing between schools. Upon completing the course, students receive a certificate.

Additionally, we provide Open Course Ware (OCW), Massive Open Online Courses (MOOCs), Micro Digital Courses, and Distance Learning Courses. These initiatives facilitate the open sharing of knowledge and resources with all learners, including access to higher education resources and learning opportunities for vulnerable populations and those outside the traditional education system.



Public events

The BOOK Siyi Lecture Series and Art Walk Lecture Series are designed to invite experts or professionals to share their knowledge and practical experiences on various topics, allowing students and the general public to broaden their horizons, explore issues, and inspire potential possibilities.

Art Center organizes various art exhibitions and performance events free of charge, providing opportunities for students, faculty, and community members to participate in and appreciate artistic activities.

The Office of Student Affairs organized free-themed educational lectures and activities open to the general public. In the 2024 academic year, a total of 13 lectures or workshops were held, covering topics such as gender equality, interpersonal relationships, intellectual property rights...etc

Micro-project for high school students:

Every year, Providence University offers exploratory free micro-project courses for high school students. Through problem-oriented and action-oriented experiential learning, students engage in hands-on learning by tackling real-world problems or learning through teamwork.



PU Talk Forum:

Since 2013, Providence University has regularly organized the "PU TALK Forum" as a platform for knowledge dissemination and exchanging ideas. This forum invites experts and scholars, encourages students and staff to share their life stories and diverse experiences, and focuses on developing students' oral storytelling skills. Over the years, the forum has covered a wide range of topics and attracted participation from both on- and off-campus audiences for free, with at least 201 sessions held to date.

Providence University has been organizing the TEDx Providence University annual conference since 2018. Over the course of 3 years, the event has attracted a total of 1,190 participants. In 2024, the 'Singula Point Conference' will be held, symbolizing the connection and dissemination of 'new concepts' through various actions that aim to change existing perspectives and thinking. Topics will include media entrepreneurship, technology applications, and sustainable development, with 6 invited speakers and an expected audience of approximately 350.



Vocational training

N/S Terminal:

PU's N/S Terminal is established to promote the goals of cross-border economic policies. It focuses on innovative talent cultivation, e-commerce skills training, and entrepreneurship counseling, utilizing digital and media equipment for digital talent development. It provides the needs of small and medium-sized enterprises (SMEs) and startups in the central Taiwan by assisting in linking domestic and international e-commerce resources.

College of Continuing Education:

PU has established specialized educational activities for various community stakeholders, including alumni, local residents, and working teachers. These activities aim to provide opportunities for professional training, knowledge updating, and skill enhancement in the community, promoting lifelong learning and career development. We offer a variety of courses aimed at professional advancement, covering fields such as industrial technology, educational technology, childcare, infant food processing, traditional folk therapy training, and others.

Labor College:

PU collaborates with the Labor Affairs Bureau of Taichung City Government to establish the Labor College to encourage our labor friends to enhance their knowledge and skills through continuing education while working. The courses covering various subjects such as industrial development and technical enhancement, digital information application, management, labor rights protection, and industry/workplace professional language are available.





Education outreach activities beyond campus

Digital Learning Partner Program

PU's Digital Learning Partner Program has reached its seventh year. We equip our students with the skills to use information tools and incorporate resources into educational contexts effectively. Through online learning platforms, we deliver customized teaching materials directly to junior high and elementary school students in remote areas with one-on-one interactions to overcome urban-rural spatial barriers. We aim to cultivate a more inclusive digital learning environment for remote children, fostering their enthusiasm for learning and nurturing their holistic development. By enhancing remote students' learning motivation and interest, we strive to advance equitable educational opportunities across urban and rural regions.

Voluntary activities for local communities

Through partnerships with nearby communities such as Jinjiang, Xing'an, Caonan, and Nanshe, our university gains insights into each community's current development status. After identifying communities needing resources and connections, including elderly living, smart health, and green care, we provide in-depth support systems tailored to their needs. By integrating local issues with teachers' professional expertise, we lead student involvement and conduct community interviews and exchanges. This process confirms and integrates the community's development status and direction.

Student Club Volunteer Services off campus

In the 2024 academic year, student clubs at Providence University established service teams that integrated professional service-learning

programs and actively engaged in community outreach and institutional support. A total of 64 service teams participated, providing services to 3,148 individuals across various communities.





Achieve gender equality and empower all women and girls

Diverse & Equal Workplace

Providence University has established the "Gender Equality Education Committee" and regulations such as "Regulations on the Prevention and Control of Sexual Harassment or Sexual Bullying on Campus," "Implementation Points of Gender Equality Education," "Key Points for Safeguarding and Counseling Assistance for Pregnant Students" is to safeguard the rights and interests of employees and students on campus, and to establish gender-equality educational resources and a friendly environment.

Award :

Our inclusive approach is reflected in the 15,000 NTD award to those who have achieved specific results in promoting or actively cooperating with the practical work of gender equality education or promoting and maintaining a friendly campus environment.

Gender-related Course :

The popularity of our gender equality-related courses is evident in the 218 courses offered, with 3473 male students and 6651 female students taking the classes, for a total of 11,186 students.

Facilities :

The university has established nursing rooms, designated friendly parking spaces, a 24-hour security camera system, a campus safety notification network, safe walking corridors, and emergency call buttons.



Ensure inclusive and equitable quality education and promote lifelong learning opportunities for all

Water Management

Providence University primarily sources its water from municipal and groundwater. The university holds legal water rights for its wells, and the extracted groundwater is used for irrigation. Through the "energy management system," the university monitors water resource consumption and waste, regularly tracking the overall water usage on campus and formulating water resource management goals and plans. Providence University, through the water-saving implementation plan established in 2013, not only promotes water conservation measures and enhances water efficiency across various units but also plays a crucial role in advocating for water-saving campaigns. This active involvement in promoting a correct understanding of water usage should inspire us all to do our part in efficiently using water resources.

1 Water-efficient Facilities	2 Rainwater collection system	3 Water-efficient Building	4 Wastewater Treatment	5 Leakage Control
---------------------------------	----------------------------------	-------------------------------	---------------------------	----------------------

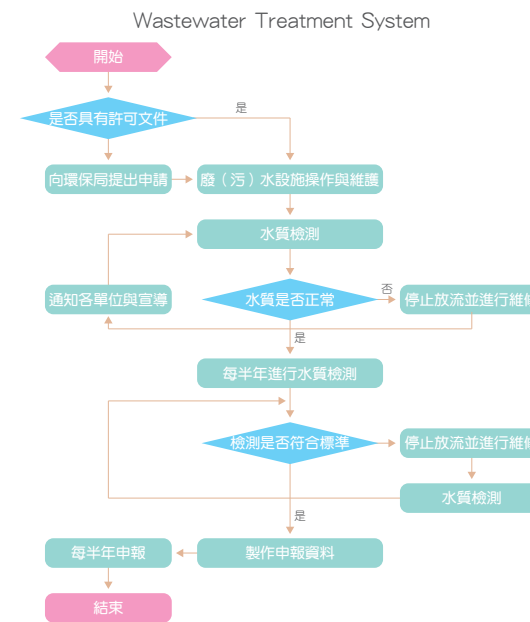
Water Consumption	2023	2024
Tap water consumption (tonnes)	98,797	42,100
Underground water consumption (tonnes)	201,103	276,946
Rain water consumption (tonnes)	3,477	2,934
Total water consumption (tonnes)	303,377	321,980



Wastewater Treatment, Prevention and Control

Providence University has established a wastewater treatment plant and developed a "Wastewater Treatment Operation Manual." The wastewater treatment plant and domestic sewage treatment facilities are managed by designated personnel responsible for daily operations. Contracts are in place for regular maintenance, and every six months, a certified company approved by the Environmental Protection Administration conducts water quality testing for the wastewater, ensuring compliance with discharge standards. Additionally, the university submits reports to the Taichung City Environmental Protection Bureau every six months, as required.

Wastewater Treatment	2022	2023
Designed maximum capacity (tonnes/day)	1,015	1,015
Actual treated capacity (tonnes/day)	278	212





Ensure access to affordable, reliable, sustainable and modern energy for all

Energy Management

Providence University has adopted the ISO 50001:2018 energy management standard to oversee its comprehensive energy-saving and carbon reduction initiatives on campus. The intelligent energy and resource management system can monitor and collect electricity usage data from campus buildings. This system's energy inspection procedures can identify energy-intensive and wasteful equipment, aiding the Energy

Management Committee in developing plans and policies for enhancing energy efficiency. The university is gradually reducing energy consumption through a multifaceted approach that includes improving energy-consuming equipment, implementing energy management measures, promoting energy zoning management, establishing self-management mechanisms for each building, adding renewable energy facilities, and adopting green building practices.

靜宜大學 PROVIDENCE UNIVERSITY 能源政策

靜宜大學秉持「進德、修業」之校訓，以「培育具有國際觀、專業就業能力及利他思維之社會公民」為教育目標，並積極推動綠色學習環境，期望成為綠色大學。基於對節能減碳的認知，提升能源使用效率之理念與普及高等教育的社會責任，靜宜大學研透過持續改善的策略，降低教學、研究及行政活動等過程衍生之溫室氣體排放及能源使用。為此，我們承諾：

- 一、落實能源管理策略，提升能源使用效率
- 二、審覈能源目標、標的，持續改善能源績效
- 三、確實遵守能源法規，優先採購節能產品
- 四、強化綠色大學特色，建構永續校園環境

校長：林思宏



Renewable Energy

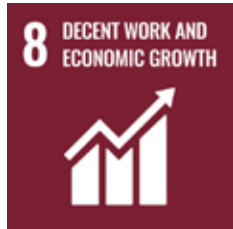
In 2019, Providence University installed solar photovoltaic systems on the rooftops of five buildings, which were reviewed and approved by the Ministry of Economic Affairs' Energy Bureau. The systems had a total capacity of 881.265 kW. In 2024, the total electricity generation reached 1,195,599 kW, which accounts for 9.4% of the energy consumed.



Energy Consumption	2024
Energy consumption (GJ)	45,850
Gas consumption (GJ)	342
Gasoline consumption (GJ)	106
Diesel consumption (GJ)	56
Total energy consumption (GJ)	46,354
Total campus floor area (m2)	301,792
Energy intensity (GJ/m2)	0.1536

Note: Energy conversion factors used for electricity (0.0036 GJ/kWh), gas (0.04 GJ/m3), gasoline, (0.033 GJ/L), and diesel (0.036 GJ/L)

Year	2022	2023	2024
Energy Use Intensity (kWh/m2.yr)	61.79	58.3	61.5



Promote sustained, inclusive and sustainable economic growth, full and productive employment and decent work for all

Friendly Work Environment

Labour Rights Protection

Providence University has issued a Workplace Violence-Free Statement to ensure the safety of all personnel and to eliminate any instances of workplace violence.

PU also recognizes the labor rights (freedom of association and collective bargaining) of faculty and staff, including women and foreign faculty members. They participate in various meetings and organizations to discuss important issues such as coordinating labor-management relations, promoting labor-management cooperation, working conditions, employee welfare, and improving work efficiency, in order to strengthen labor-employer relations, protect workers' rights, and promote social and economic development. Additionally, PU respects the active participation of faculty and staff in these meetings and organizations, further maintaining a harmonious working environment..

Providence University is committed to creating a working environment that emphasizes equality and opposes discrimination. We strictly consider the professional qualifications and experience required for the position without any differential treatment based on gender, race, language, religion, political affiliation, place of residence, sexual orientation, marital status, or disability.

PU established the Gender Equality Education Committee to promote gender equality, uphold personal dignity, and create gender-friendly educational resources and a campus environment. If employees encounter gender discrimination, they may appeal to the committee.

In terms of hiring Indigenous people, PU follows the Indigenous Peoples Employment Rights Protection Act to ensure the hiring quota for Indigenous employees, safeguarding the employment rights and economic well-being of minority groups.

PU has established the Providence University Sexual Harassment Prevention Act to protect employees from employment discrimination and other human rights violations.



Build resilient infrastructure, promote inclusive and sustainable industrialization and foster innovation

Industry-Academia Collaboration

Providence University actively promotes industry-academia collaboration to foster innovation, strengthen practical learning, and enhance industrial competitiveness. Through partnerships with technology, manufacturing, and sustainability-oriented enterprises, the University integrates academic expertise with real-world applications. Faculty and students jointly engage in research projects, internships, and technology transfer programs, advancing areas such as semiconductor technology, optoelectronics, sustainable materials, and ESG management. In 2024, there are 40 industry-university collaboration projects.

These collaborations not only bridge the gap between academia and industry but also contribute to talent cultivation, industrial upgrading, and regional innovation development.





Reduce inequality within and among countries

Non-discriminatory Admissions Policy

Providence University focuses on compassionate education and prioritizing students' well-being. All students enjoy the rights, courses, and activities the university provides. The university's educational policies, admission policies, scholarships, and loan programs also do not differentiate based on age, gender, gender identity, sexual orientation, race, disability, color, religious belief, or ethnic or racial origin.

Policies regarding international student enrollment are based on regulations set by the Ministry of Education. Eligible international students from 36 different countries applied for the 2024 academic year, contributing to the university's diverse and international learning environment.

Providence University is committed to protecting the educational rights of disadvantaged groups to promote the sustainable development of equality. The university offers a variety of admissions channels and actively encourages admissions from underprivileged groups, including Aboriginal students, students with disabilities and students with financial difficulties. 185 students admitted for the 2024 academic year.

Providence University provides comprehensive support to help the economic and educational needs of students from various backgrounds. This includes students from experimental education programs, economically disadvantaged backgrounds, those with physical and mental disabilities, indigenous students, and new immigrants.

We currently employs 13 faculty and staff with disabilities in compliance with the provisions of the Disability Rights Protection Act.

PU upholds the legislative spirit of the Indigenous Peoples Employment Rights Protection Act, and our faculty and staff include 29 Indigenous employees.

PU has established a Gender Equality Education Committee to formulate gender equality education implementation plans, promote gender equality concepts and education on campus, prevent and address incidents of gender discrimination, sexual assault, sexual harassment, or sexual bullying, investigate and handle gender-related cases, and establish a safe and gender-discriminatory-free campus environment.

Social services

Services for people with disabilities

A total of 13 community service activities were conducted at various locations, including the Shalu Children's Welfare Center, Sanmin Section Social Housing in Wuci District, Taichung Autism Education Association, National Museum of Natural Science, Shoe Industry Exhibition Center, Longgang Activity Center, Taiwan Glove Museum, Xihu Sugar Factory, Haoqi Elderly Care Center, and Delu Home. These initiatives were organized by the Don Bosco Club and the Chung Ching Club, engaging 175 student volunteers and 179 institutional participants, demonstrating Providence University's commitment to social care and community engagement.

Individuals with autism (hereafter referred to as participants) often face challenges in understanding themselves and others, as well as in developing basic social interaction skills. Difficulties such as limited eye contact, minimal response to others, and challenges in expressing emotions in socially accepted ways often make interpersonal communication and social adaptation more difficult. To support their social learning and inclusion, the Don Bosco Volunteer Club of Providence University collaborated with the Taichung Autism Education Association to organize experiential learning activities at the Taiwan Glove Museum and Xihu Sugar Factory. Through team-building games, friendly guided tours, and hands-on DIY workshops, the program encouraged participants to engage with new people and environments, develop greater independence, and build social adaptability. These activities aimed to foster good daily habits, enhance their sense of accomplishment, and inspire them to confidently embrace new experiences in the future.





Make cities and human settlements inclusive, safe, resilient and sustainable

Friendly Campus

The campus monuments, buildings, and natural heritage landscape on Providence University's campus are open to the public free of charge. Our Lady of Providence offers daily open access or arranges guided tours by appointment. PU will also continue to maintain these buildings and landscapes, keeping them open for the public in the long term.

Building Names	Opening Hours
Our Lady of Providence Chapel	Monday through Friday 1pm-5pm
PU Archives	Saturday and Sunday 9am-12pm & 1:30pm-5pm
Campus sculptures	Monday through Friday 8am-5pm
	Open 24 hours



Luking Library

In 1964, a new library, "Luking Library," was constructed to commemorate the university's founder, Mother Marie Gratia Luking of the Sisters of Providence. The library was relocated to the new campus in Shalu in 1988, and it was expansion in 2002. In 2016, the International Federation of Library Associations and Institutions(IFLA) certified it as one of the "1001 Libraries to See Before You Die. " Luking Library offers free registration so the public can access and use library spaces and reading facilities. Each floor is equipped with accessible bathrooms and water dispensers. Elevators are also available to transport books and for disabled students.

	2021	2022	2023
Book Collection	788,860	797,720	804,660
Journals	84,860	87,073	87,667
Available E-resources	946,199	1,381,064	1,414,941
Audiovisual Materials	47,583	48,239	48,492

Art Center

The Providence University Art Center was established in 1998, primarily to offer various art exhibitions and performance activities. The main showroom covers an area of over 245 m², aiming to provide professional and high-quality exhibitions. The Art Center hosts multiple exhibitions each year and offers an open exhibition space for thematic activities by various units and student clubs within and outside the university. The Providence University Art Center provides a free access venue for faculty and students, as well as the community, to conveniently visit and appreciate art-related activities.





Green space

PU provides free public access to open spaces and green spaces once signing up at the University entrance. The campus covers an area of approximately 30 hectares, with most of the land consisting of trees, shrubs, and grassland, aside from the buildings. The current green coverage rate is 54%. PU is also actively working to maintain the campus's green coverage rate by continuously planting trees and distinctive plants. The various activities held in the open areas and recreational spaces of the university are also open to community members and the general public, welcoming them to participate on campus.

Off-Campus Art and Cultural Performances

The Providence University Department of English Language, Literature, and Linguistics presented its graduation drama, "1984," at the university's St. Peter Hall Theater for audience within and beyond campus. Department Chair, Prof. Daphne Li-Jung Huang, highlighted that drama performances enhance students' ability to integrate their skills, offering a comprehensive showcase of the culture, literature, drama, and film studies they have learned over their four years in the program. This year's graduation performance of "1984," including scriptwriting, casting, set design, prop making, costumes, and rehearsals, was entirely handled by the students. In addition to showcasing their comprehensive English proficiency, interdisciplinary skills, creativity, and teamwork, the performance also offered the general public an opportunity to appreciate the art of drama.



Ad-Hoc Events

Through the exhibition space in the Luking Library, Providence University regularly organizes various art exhibitions, such as photography exhibitions, paper sculpture exhibitions, model exhibitions, and digital art exhibitions.

Performances	2023
Number of Local Arts Exhibitions	5
Number of Theater Performances	2
Number of Music Concerns and Performances	29
Number of Music and Dance Services and Performances held in the communities	44
Total Number of Performances	80

Name of Exhibition	Number of Visitors
Weiderland:Paper Sculpting and Miniature Art Exhibition	1,435
25th Anniversary Special Exhibition of the Art Center	1,003
Photography Exhibition	763





Sustainable practices targets

Bus stop at the main gate: Faculty, staff, and students can use their identification cards for bus fares, and enjoy the first 10 kilometers of travel for free.

Campus shuttle buses: Since 2016, after coordination with the Taichung City Government, city bus routes have started to enter the campus. Currently, there are 3 bus routes operating within the campus, with 4 bus stops set up to facilitate movement for faculty, staff, and students. Additionally, since 2022, the campus shuttle buses have incorporated green energy electric buses to further reduce carbon dioxide emissions.

Electric scooters and golf cart services: The university provides electric scooters and golf carts for use by faculty, staff, and visitors.

Pedestrian-priority trail: The campus features pedestrian-only areas and crosswalks on roads to provide safe, pedestrian-priority zones. Additionally, the central axis of the campus is vehicle-free, prioritizing pedestrian access.

Campus shuttle buses: Since 2016, after coordination with the Taichung City Government, city bus routes have started to enter the campus. Currently, there are 3 bus routes operating within the campus, with 4 bus stops set up to facilitate movement for faculty, staff, and students. Additionally, since 2022, the campus shuttle buses have incorporated green energy electric buses to further reduce carbon dioxide emissions.

U-bike (public-sharing bikes): A bicycle station provided by the Taichung City Government is installed at the campus entrance. This station offers a convenient transportation option between bus stops and the campus for faculty, staff, students, and visitors, reducing the use of fuel-powered vehicles.

Charging and battery exchange station: To encourage the use of electric vehicles among faculty, staff, and students, the university has set up charging stations and battery exchange stations for electric scooters.





Ensure sustainable consumption and production patterns

Ethical Procurement

We prioritize suppliers with environmentally friendly management practices and manufacturers offering eco-friendly labels, low pollution, recyclability, and energy efficiency. To encourage the production and use of green products, promote green consumption, and achieve environmental protection benefits, PU prioritizes purchasing goods and services produced by organizations for people with physical and mental disabilities or sheltered workshops to support disadvantaged groups. PU has consistently received the "Outstanding Private Enterprise and Organization Award for Green Procurement Amount" from the Taichung City Government. In 2024, the amount PU spent on green procurement was NT\$7,787,124.

Year	2022	2023	2024
Amount of green procurement (NT\$)	17,040,506	10,970,264	7,787,124

Food and Ingredient Procurement

Vendors for the school cafeteria must sign contracts with Providence University and comply with the following regulations to ensure the food hygiene, safety, and quality of food:

Providence University Dining Hygiene Management Regulations

Act Governing Food Safety and Sanitation

School Hygiene Act

Suppliers are required to provide food and ingredients that meet these standards and adhere to the university's traceability policies or relevant policies set by the Ministry of Education and health authorities.



Waste Management

Providence University has implemented a robust waste management system that categorizes waste into four main types: general household waste, regulated property waste, laboratory waste, and infectious medical waste, with a particular focus on Categories C and D.

General Household Waste: General household waste is processed through a four-stage workflow outlined in the "Providence University Waste Management and Resource Recycling Procedures." Recycling bins for each of the four categories are strategically placed throughout campus to encourage faculty, staff, and students to sort their waste properly. To ensure compliance, cleaning staff conduct a secondary review of the waste before it is sent to the recycling facility, where a dedicated team performs a final inspection to verify accurate classification. Ultimately, a contracted cleaning company manages the transportation and processing of the waste.

Regulated Property Waste: Regulated property waste involves the disposal of any university-owned equipment or instruments, which is overseen by the administrative team. They assess and categorize these items as usable or non-usable. Usable items are either donated, sold, or repurposed for university use, while recyclable non-usable items are processed according to established recycling protocols. Items that cannot be recycled or reused are classified as waste.

Laboratory Waste: The Departments of Applied Chemistry and Food and Nutrition have designated waste storage areas specifically for laboratory waste, managed by appointed personnel. Their duties include setting classification standards for laboratory waste, collecting and managing the waste, establishing necessary equipment, coordinating disposal processes, and ensuring regular online reporting.

Infectious Medical Waste: Infectious medical waste is primarily generated by the Department of Food and Nutrition and the Counseling and Health Center. The university has an Animal Experiment Management Group that must approve any animal research before it can commence. Additionally, there is a refrigerated storage area designated for the safe storage of infectious medical waste, which is subsequently handled by a qualified waste disposal company for safe removal.

Item	2022	2023	2024
General Household Waste (tons)	223	286	238
Regulated Property Waste (tons)	0.145	0.111	0.150
Laboratory Waste (tons)	4.295	4.450	4.245
Infectious Medical Waste (tons)	47.20	39.37	44.60



Sustainable production and consumption patterns

Local Transfer of Craft Knowledge

Faculty and students explored and documented the ecological and cultural characteristics of Alishan while collaboratively designing experiential courses with a focus on local features. From August to December 2024, they organized hands-on art workshops such as Plant-Scented Ice Cubes and Flora & Forest activities, enriching the content of the experiences and empowering students to apply their learning to future local projects.

Local Product Design

The “Practical Brand Design” course was developed with a focus on “Forest and Cultural Creative Design”, aiming to strengthen the design skills of students in the Department of Taiwanese Literature. Centered on the local tea industry, the course connected students with small-scale farmers to carry out product design projects. Using “project-based practice” as the main approach, students were guided to create products that reflect local characteristics and identity, producing designs that could be adapted for future local applications.

Implementation of Forest-Style Event Curation

Providence University collaborated with local residents and partnered with government and industry resources to organize the Alishan Four Seasons Lifestyle Proposal activities. Hosted by the Chiayi Branch of the Forestry and Nature Conservation Agency, Ministry of Agriculture and coordinated by Ide Brand Design, the events spanned four seasonal themes: Spring – Dialogue with Cherry Blossoms and Music, Summer – Starry Sky Cinema, Autumn – Black Forest Party, and Winter – Forest Coffee Salon. These activities were designed to create memorable forest cultural experiences for visiting travelers.





Take urgent action to combat climate change and its impacts

Carbon Management

In 2009, Providence University began conducting greenhouse gas inventories, gaining an accurate understanding of its emissions data and levels for the first time. By 2023, we successfully passed the ISO 14064-1:2018 external greenhouse gas verification and adopted an operational control approach to define the inventory scope. We conducted greenhouse gas inventories for emission sources from scope one to three. To support international initiatives and effectively grasp the actual situation of greenhouse gas emissions, we are developing effective carbon reduction plans in response to global decarbonization initiatives committed to achieving carbon neutrality on campus in 2050.

Item	S1 Emission		S2 Emission		S3 Emission	
	2023	2024	2023	2024	2023	2024
Emissions (tCO ₂ e)	1,052.64	898.27	5,637.48	5,622.23	2,883.72	3,279.00

Carbon Reduction Actions

Education :

In 2024, Providence University has offered 252 courses related to climate change, enhancing the carbon reduction and early climate disaster detection and mitigation knowledge of faculty, students, the community, and partners

Green campus :

Providence University has planted over 4,000 plants on campus, with 79% being native plants of Taiwan.



Conserve and sustainably use the oceans, seas and marine resources for sustainable development

River Cleanup and Environmental Conservation Action

The Fazi River, which connects to the Huludun hydrological system in Fengyuan, plays a vital role in improving water quality, reducing pollution, and supporting diverse ecological habitats. However, improper waste disposal by nearby residents—treating the river as a drainage ditch—has led to pollution and sediment accumulation, threatening both water quality and the surrounding ecosystem. To address this issue, Providence University, in collaboration with the Society of Wilderness, organized the “Fazi River Cleanup Activity.” Supported by the Department of Social Work Student Association, the initiative engaged both local and international students from India, Indonesia, Vietnam, South Africa, and Uganda, alongside community volunteers. The event promoted environmental conservation awareness, educating participants about the river’s ecological functions and the importance of waste management. Through hands-on experience, participants developed habits to reduce plastic use and minimize unnecessary waste. To date, 126 cleanup events have been held, with volunteers collecting over 80 kilograms of waste in a single morning, reinforcing the connection between community action and environmental sustainability.





Protect, restore and promote sustainable use of terrestrial ecosystems, sustainably manage forests, combat desertification, and halt and reverse land degradation and halt biodiversity loss

Ecological Education

Restoration of original species of fireflies

Providence University has observed scattered individuals of fireflies both on and off campus, identified as the native Taiwanese species *Pyrocoelia analis*. Experts have confirmed that there should be a population of Taiwanese window fireflies in the surrounding environment, particularly in the Dadu Mountain area; however, their numbers are extremely low and require habitat restoration. Utilizing various ecological knowledge and methods, we will plan and design habitats that meet the basic needs of the target species, followed by subsequent management to ensure the survival of the population. The establishment of biological habitats on campus not only enhances biodiversity within the university but also allows students to learn practical knowledge and techniques related to habitat creation. The Taiwanese window firefly has been recorded multiple times on the Providence University campus. This activity is part of the "Natural Resource Management" course, inviting Professor Wang Yijie, the head of Senyan Ecology Co., Ltd., to provide guidance on campus. We will select three areas around the Francis Hall to build insect hotels using wooden pallets to attract more invertebrates, particularly the flat snail population, which can serve as food for the Taiwanese window fireflies.



Lynx Forest Ecological Observation and Recording

Providence University collaborates with the Miaoli Wildcat Forest School at various bases, including the "Shitanli Mountain Base," "Fangliaokeng Base," "Beihe Base," and "Nanwo Base," to conduct ecological observations and recordings throughout different seasons. Professor Wu Jinshu guides students in observing and understanding the ecological environment of the "Wildcat Forest" ecological hotspot, while Professor Zhu Jingrong leads a "Forest Healing Handmade" activity, where students create leaf prints using locally sourced materials. Additionally, Professor Luo Yaoming conducts "Forest Healing" activities to enhance students' awareness of the environment and nature. Teachers also engage in the field to brainstorm ways to integrate concepts of biodiversity conservation and habitat preservation into their curricula, activities, and lesson plans.

Campus Ecological Education

Through interdisciplinary collaboration and diverse participation, Providence University fosters joint learning among faculty and students, encouraging practical actions that respond to local needs and explore public issues. Student teams also receive professional training and take part in organizing campus biodiversity exhibitions and local advocacy initiatives.

2024 World Biodiversity Campus Exhibition

In response to the 2024 International Day for Biological Diversity, the University hosted static exhibitions across campus buildings and a window display at the Gesha Library Wen-Si Clinic. The exhibition introduced topics such as invasive species, global ecological compensation initiatives, and the impacts of habitat destruction, raising awareness of biodiversity conservation.

Qingshui Military Dependents' Village Summer Market – "Qingjuan Shiji: Midsummer Chapter"

The event featured interactive sessions such as "Let's Go! DIY Eco-Friendly Bookmarks," "Shallow Mountain Little Partners' Creative Fun,"

and "Environmental Conservation Storytime." These activities helped the public understand the importance of biodiversity in maintaining ecological balance and human well-being.

Campus Advocacy Market

The market invited organizations such as the Environmental Protection Association and local eco-friendly vendors to promote sustainable lifestyles. Through displays of woodcrafts, seeds, ceramics, handmade goods, and organic foods, the event showcased the accessibility of sustainable living. An exhibition at the market also focused on shallow mountain ecosystem issues, highlighting the ecological cost of urban development and calling for greater public awareness of wildlife conservation.





Promote peaceful and inclusive societies for sustainable development, provide access to justice for all and build effective, accountable and inclusive institutions at all levels

Legal Services and Education

In collaboration with the Taichung Legal Aid Foundation, lawyers were invited to campus to provide 20 free legal consultation sessions for the public. Law students volunteered to assist with administrative tasks, helping address many basic legal issues faced by the public, ensuring the protection of legal rights, supporting vulnerable groups, and promoting social fairness and justice. Law students also formed volunteer teams to visit Ida Thao Elementary School, using interactive and engaging methods such as drama and game-based activities to introduce topics including anti-drug, anti-domestic violence, anti-bullying, and anti-sexual harassment. They simulated courtroom trials, allowing students to experience different roles in a trial, thereby deepening their understanding of the rule of law. Additionally, volunteer teams of law students visited Gongguan Elementary School and Gongming Elementary School during morning self-study periods. Through role-playing activities, students learned how to respond appropriately to issues such as domestic violence, bullying, drugs, and sexual harassment. These activities aimed to prevent unfortunate incidents, safeguard students' physical and mental well-being, and teach them how to protect themselves and others while respecting the rights of all.



17 PARTNERSHIPS
FOR THE GOALS



Strengthen the means of implementation and revitalize the Global Partnership for Sustainable Development

Progressing SDG Policies

Providence University brings together experts from various academic fields and actively collaborates with government and non-governmental organizations (NGOs) to identify problems and challenges, develop policies and strategies, contribute to policy-making, express opinions, and conduct relevant research.

The Department of Mass Communication participated in the "Survey on Citizen Participation in the Public Policy Network Participation Platform and the Review Meeting for Inactive Accounts Questionnaire" organized by the National Development Council. Through this platform, the government can consult with the public, and citizens can provide policy suggestions and monitor the implementation of government-announced policies.

Since 2009, the Department of Ecological Humanities has participated in the "Seminar on the Assessment and Conservation Strategies for the Wuling Stream Ecosystem" organized by the Shei-Pa National Park Administration. Through the integration, comparison, and data analysis, he proposed conservation strategies and future development directions for the Wuling stream ecosystem, making a significant contribution to biodiversity research.

Assistant Professor Shu-Ya Lin from the Department of Law served as a member of the first term of the Presidential Office's Indigenous Historical Justice and Transitional Justice Committee (2018-2020) and as Chairperson of Amnesty International Taiwan (2016-2020). She has long been dedicated to Indigenous issues and has offered numerous policy suggestions to promote ethnic reconciliation.

The Department of Social Work and Child Welfare has actively participated in childcare policy initiatives by the National Development Council and has long served in critical roles with several governmental bodies, including the Ministry of the Interior's Child Welfare Bureau and the Executive Yuan's Social Welfare Promotion Committee. Additionally, the department has collaborated with the Taichung City Government's Domestic Violence and Sexual Assault Prevention Committee to help advance policies and regulations related to children's rights, social welfare, women's welfare, and family support.

SDG Initiatives & Collaborations



Tactile-Driven Environmental Art

The university’s USR team collaborated with a resident Japanese artist from the Banqiao 435 Art Zone, using the Green Light Dream Park in Xing’an Community as their project site. Focusing on environmental sustainability, they repurposed discarded wood from the site and reimagined a damaged artwork of the goat from the park’s Chinese zodiac collection. Elderly participants engaged with the materials through touch, experiencing both their tactile qualities and the underlying environmental concepts. The resulting works were exhibited in collaboration with Changhua Art Museum and Yamanashi University in Japan, embodying the spirit of inclusive art.

Nanshe Patchouli Handmade Soap

Elders in the Nanshe Community use patchouli plants grown locally to produce Patchouli Handmade Soap. Beyond serving as a hand-cleaning product during the pandemic, it has become the community’s first signature souvenir. The university’s USR team leveraged local community resources to develop a marketing plan for this community-specialty product, supporting the community’s goal of evolving toward a social enterprise.

Circular Economy with Waste Duck Eggshells

Waste duck eggshells produced by enterprises in the Fangyuan coastal area are cleaned, de-membraned, and ground to create antibacterial fabrics and household products. Additionally, crushed glass and carbonized duck eggshells are repurposed into coasters that are both absorbent and reusable after drying, demonstrating a practical circular economy approach.

Handmade Paper from Agricultural Waste

The university collaborated with indigo production sites in Gaodong Village, Qingshui, and Yuanli Township to use agricultural waste—including indigo stems and water bamboo shoot shells—to make handmade paper. The experiential workshops were brought into elementary schools, allowing students to learn about sustainability, agricultural waste, and the circular economy through hands-on activities.

Providence University “Flying Eagle Little Red Riding Hood” Project

Economically disadvantaged women internationally often face a shortage of sanitary pads during menstruation, increasing their risk of urogenital infections. Some women are even forced to drop out of school or engage in coerced sexual activity, indirectly heightening the risk of HIV infection. Providence University organized the “Hand in Hand, Love Together” initiative to instill the value of “helping others benefits oneself” in students. Participants personally made 360 eco-friendly cloth sanitary pads and 152 small cloth towels, which were then distributed to economically disadvantaged women and elderly care institutions in Kenya, Orchid Island, Cambodia, and the Philippines.



SDG Initiatives & Collaborations

Together for Change: “Zhai-Yi Qi” Project

Cambodia faces poverty, limited educational resources, and public health challenges. Many children grow up in resource-scarce environments, lacking access to quality education and proper hygiene. To address these issues, Providence University students formed a service-learning team to support the children at Chagao Orphanage through diverse educational and health-promotion activities. They assisted with major cleaning and wall painting to improve living conditions, taught proper tooth-brushing habits to raise oral health awareness, and integrated lessons in Chinese, English, and Khmer, including vocabulary, numbers, and songs. Artistic activities such as paper-cutting and painting were used to stimulate creativity, helping children regain confidence and joy in learning. In the villages of Chagao Province, the team participated in a poverty alleviation program by Crown Technology, assisting in transporting and distributing essential supplies to ensure they reached families in need. At the Mother Teresa Convent in Phnom Penh (Hope House), students provided volunteer haircuts and helped clean the facility, improving the quality of life for residents who have long faced hardship and creating a cleaner, safer living environment.



Food Bank Thanksgiving and Christmas Joint Service

Families receiving support from the food bank often face economic difficulties, limited resources, and minimal social support, and they may lack knowledge of daily care and cultural learning opportunities. Centered around Thanksgiving and Christmas, the university's Spanish Department, Social Work Department, and Malaysian international service-learning team collaborated to organize activities including traditional handmade herbal sachets and soaps, as well as traditional songs and games from various cultural festivals. Food bank recipients were invited to participate in these events on campus, aiming to enhance understanding of foreign cultures, broaden international perspectives, and foster cultural inclusiveness. Participants also learned to make daily products using natural plants, reducing reliance on chemical products and promoting environmental awareness. Second-hand toys were distributed to children, teaching the value of reusing items and reinforcing sustainable practices. These activities combined fun and education, allowing socially disadvantaged families to enjoy the festive spirit while experiencing warmth and care from the broader community.



